



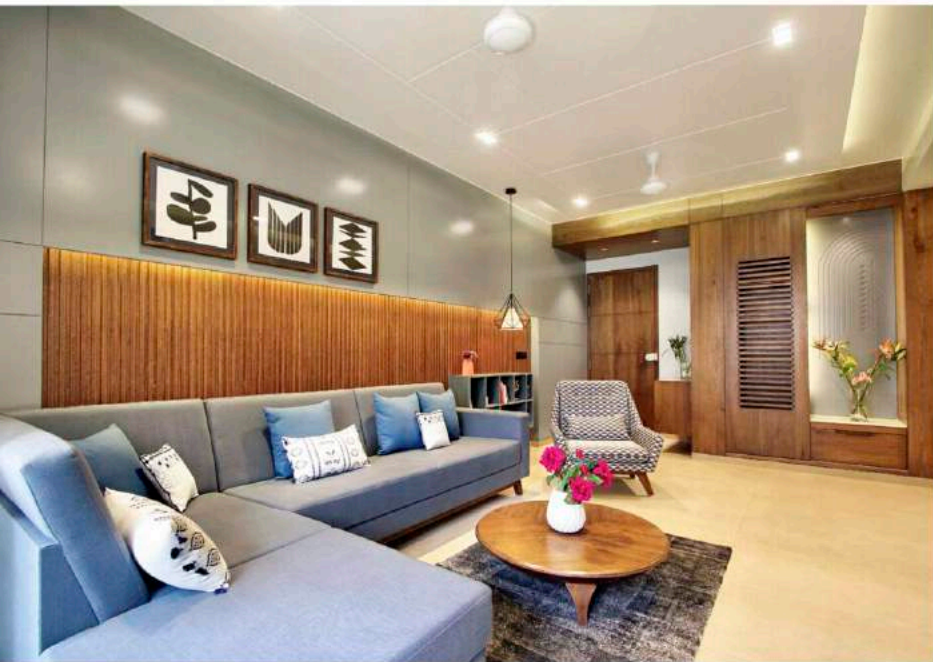
Simply Spectacular

Interior designers Archis Patel and Tanvi Rajpurohit of a+ associates come up with a seamless space enriched with elegant design elements, plenty of wood and an eclectic collection of furniture and artwork for their clients in Vadodra.

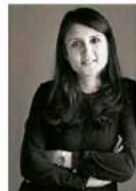
TEXT: KANUPRIYA GAVLI,
WITH INPUTS FROM THE DESIGNERS
PHOTOGRAPHY: TEJAS SHAH
COURTESY THE DESIGNERS

Our core philosophy was to create a soothing retreat for the clients while keeping all the functional aspects in place. We attempted to sketch a few basic elements, which would influence the entire space and act as the core focus of interest," say designers Archis Patel and Tanvi Rajpurohit. Neat, clean lines dominate the space without being overtly ostentatious. The design of the space allows natural light to filter through and creates a lovely ambience.

An attractive wooden handle with a treeform bird motif graces the main entrance door. As you enter this plush apartment, a fancy wooden console unit paired with a decorative mirror stands out well against a veneer panel. The mirror, fabricated with a beveled-edged wooden frame and black acrylic inlay



"We attempted to sketch a few basic elements, which would influence the entire space and act as the core focus of interest," say designers Archis Patel and Tanvi Rajpurohit.



Tanvi Rajpurohit



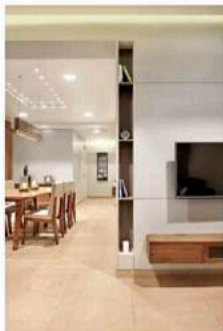
Archis Patel

FACT FILE

PRINCIPAL DESIGNERS	Archis Patel and Tanvi Rajpurohit
DESIGN TEAM	Archis Patel, Tanvi Rajpurohit and Bushra Khan
LOCATION	Vadodra, Gujarat.
CLIENT	Rahul Shrestha
AREA	1500 sq ft
TIME OF COMPLETION	January 2016



As you enter this plush apartment, a fancy wooden console unit paired with a decorative mirror stands out well, against a veneer panel.



An interesting corner niche in the partition wall of the living area can be seen.



The living space blends effortlessly into the dining space and the kitchen, that stands adjacent. Each space is allowed to flow into the other to enjoy complete visual transparency.

on it, is hung on a wooden knob through a customised brass chain. The same pattern of black acrylic inlay is repeated on the drawers of the console unit. This represents the detailed craftsmanship that can be seen all over this apart-

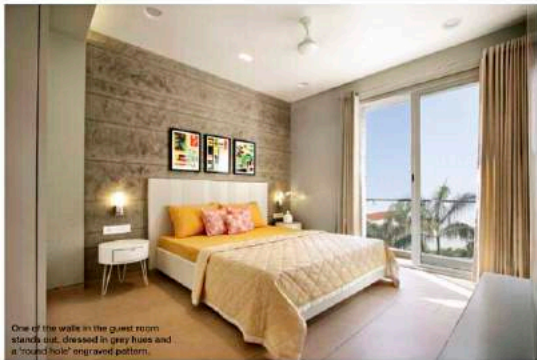
ment. Grey walls and white ceiling along with tile flooring in 'khakhi' is done in a brick pattern throughout, to break the monotony of symmetrical forms. Adding some wood to the spaces lends a warm touch to the colour palette.

'The intricate detailing on the ceiling ensures that the height is aptly maintained while artistically imbibing the RCC beams in a manner that they appear to be a part of the design. This arrangement also helps in ensuring the apt placement of the

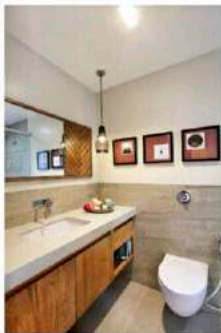
limited lighting options,' say the designers. In the day a splash of natural light and fresh air seeps in from the large glass door openings in all areas.

The living area is stylish and simply detailed with some fabric finishes. The use of

rich materials infuses a whiff of freshness to the otherwise stark spaces. The living space further blends effortlessly into the dining space and the kitchen, that stands adjacent. Each space is allowed to flow into the other to enjoy a complete visual



One of the walls in the guest room stands out, dressed in grey hues and a 'round hole' engraved pattern.



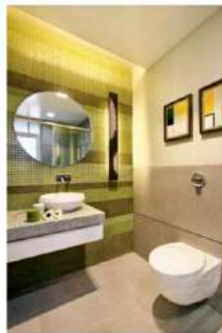
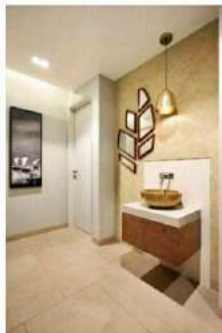
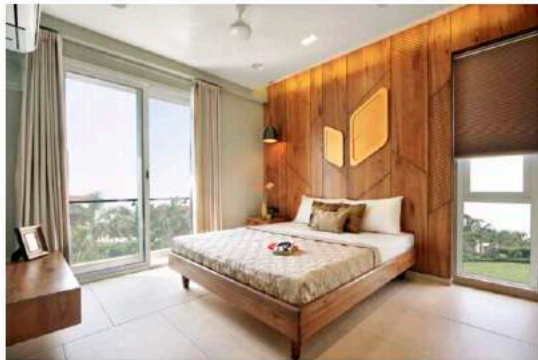
transparency that connects them all," say Archis Patel and Tanvi Rajurohit. The custom-designed sofa seating is contrasted well with a wooden low-height round center table. Vertical ply 'pattis' on the wall behind form a perfect backdrop to the off-centered pigeon-hole, made from dark grey HDF from 'Ventura'. A chair upholstered in a graphic geometric pattern completes this space. Small yet interesting features like the corner niche in the partition wall, designed to keep knick-knacks, arrange books or to simply place an accessory, are sure to catch your attention.

A small outdoor balcony is designed as a little garden

rock filled with plants. The roof of the balcony is clad in veneer along with tiny LED lights, to amplify the charm of this outdoor space.

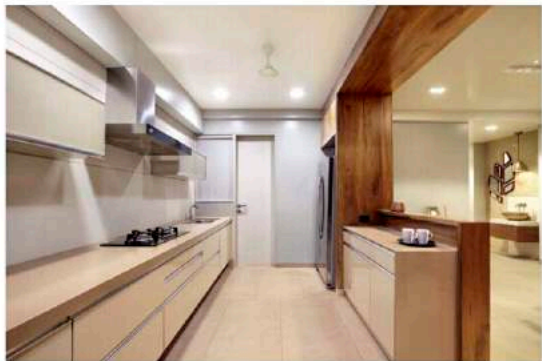
The dining is well connected to the other social spaces around it. The designers have embellished it with a custom-made wooden lamp, hung through an "SS wire roof". The ceiling is nicely designed using plenty of spotlights, to highlight the elegant six-seater dining unit.

A large niche has been created for the common basin area, finished in 'khatki oikos' paint and white quartz stone. To add some drama here, a customised mirror in the form of a dry leaf is placed in an asymmetrical format. The

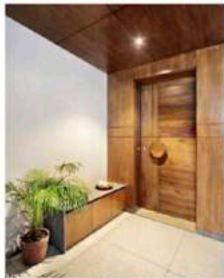


The veneer panel behind the bed in the master suite holds elegant wall art, lending the space a stylish look.

interior



The kitchen has a brown quartz stone platform contrasted with a beige tile-clad wall and drawers in the same tone.



use of a stone basin paired with a hanging brass light adds more beauty to this whole picture.

The kitchen has a brown quartz stone platform contrasted with a beige tile-clad wall and drawers in the same tone. The guest bedroom exemplifies the designer's philosophy of highlighting one primary design element and keeping all the others clean. One of the walls stands out, dressed in grey tufts and a 'round hole' engraved pattern also acting as a backdrop for the bed headboard. The bathroom is decorated with a bold metal wall light fixture along with serene paintings.

The master suite flaunts a wooden double bed in the

center, leaning against a natural veneer headboard. The veneer panel behind the bed also holds elegant wall art, lending the space a cosy yet stylish look. In the kids' room, bright upholstery and cushions heighten the air of playfulness, along with a creative pattern splashed across the white headboard.

The space is simple yet artistic in its own right! Careful selection of materials, patterns and design elements effortlessly help in achieving the goal the designers had set for themselves. The overall design of the project manages to convey a lot of character through simple variations, resulting in a chic space for the clients. 