

## OF WOOD AND BRICK

Using a vocabulary which is neither starkly contemporary nor harking back to the past, a+u associates have designed a bungalow in Mahabaleshwar spread across four levels, wrapping public and private spaces in a comfortable embrace.

A preference for wood, brick and an earthy feel was part of the brief given by the client. "Moreover, he already had a large stock of wood to be used on the site, so that more or less defined our design," says Taral Rajapurkar of a+u associates.

"The name of the bungalow, 'Atya', displayed at the entrance, has been laser cut from a floor which we sketched," discusses Arches Patel, also of a+u associates. A winding staircase further within. The site was a bare, concrete-lined shell with thick external walls, all of which were demolished, so as to reallocate spaces according to the specific needs of the family. Some changes were made to the external architecture as well. The ground floor consists of parking, a utility space for the kitchen, accommodation for the household help and a lift which goes all the way up to the third floor.

Set By Deepansh Jaisankar  
Photographs: Toos Shetye

The first floor consists of living and dining rooms, together with the kitchen, utility and washroom spaces. The quality of wood used for the slabs of both wood and brick, along with the metal meshed brick and stone tiles, adds to the overall ambience.



*The design fosters togetherness by bringing people together and giving them places to interact on each floor of the bungalow, without compromising privacy. Not 'over designed', or intimidating, this home has provided a relaxed ambience for the family.*

☎ [atassociates.05@gmail.com](mailto:atassociates.05@gmail.com)

SUB

MA

No. of Issues
36 + 8 Free
24 + 4 Free
12

I am enclosing a  
 favouring "Marv  
**YOUR DETAILS**  
 Mr/Mrs/Ms/Ms.  
 Address \_\_\_\_\_  
 City \_\_\_\_\_  
 Phone \_\_\_\_\_

THE FACE BACK DESI



Connected with the pool, terrace garden. Parking the interior, using the stone emphasizes the view from the large windows and creates a height of natural lightness, the terrace. The handrails on the wall are kitchen grade, stone wood panelled with color and good location.

The first-floor contents of the living and dining rooms together with the terrace garden and kitchen are one contiguous space. The parent's bedroom, powder room, kids room and theater are on the second floor. The earthy color palette has shades of rust and brown, original natural wood, exposed brick and similar tones in metals, such as brass and copper.

The large handle at the main floor has been custom cast from a sheet of brass. From the entrance, a 30-ft-high exposed brick wall extending to the top floor is visible, with a back-flt copper art installation of letters, the pipes from the AC ducting being used for the stems of the flowers.

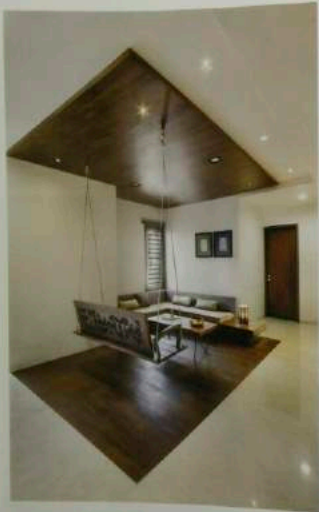
The staircase has been designed with solid wood and MS. "The detailing in the metals where a lip of wood comes up tends to meet the rise, has been designed by us," says Jaret.

A waterjetly wrought-iron staircase holds. Floating flowers and has been casted from the left over wood on the site. The large central light fixture (measuring 7 ft x 2 ft x 38 inches HD) assembled in the studio has been fabricated from a copper sheet with cut-outs in the shape of flowers, the petals folded inward to let the light glimmer through the aperture.

Closer to the main door, a portion of wooden "brick" systems all the living area. Individually cast together, they form a pattern which the light casts an interesting pattern after sunset. All the furniture has been customised in solid wood in teakwood, while the polished Acacia for the flooring in all areas ensures a seamless view out.

The terrace garden is an extension of the living space and is visually connected with the interior. The dining area is located between the kitchen and living area with Italian marble clad on one wall. Custom designed cast-iron side chairs character to the space.





The second floor consists of a family zone with a living, the master bedroom, the daughter's bedroom and a guest bedroom, all with walk-in closets. In the main bedroom, the highlight is the lacquered, with a lacquer-painted surface.

"Covered with a clear coat of PU, it is protected from corrosion," says Aydin. The wall behind is painted with a color which the children all like and makes the room, creating a warm and cozy feeling in the room. The wall is a purple-pink color.

In the daughter's room, the wall behind the bedboard is the focus of attention, with a display of all her books. In the master bedroom, in a smaller scale. Made of different woods such as walnut, oak and oak, they give the feel of old doors. Across the bed, a white ceiling of the daughter's room has given her childhood to high school, making memories it depicts the journey of her life.

The third floor has an informal living area which features a small study. Connected with the two terraces garden. Parked in the space, the room maximizes the view from the large windows and creates a sense of natural light into the interior. The wall plates on the wall are Kashi paper mache, hand painted with colors and gold powder.

The lamp frame wavy through the corner like a horseshoe, starting from the hands of the hand down, to the lamp installation on the wall near the staircase and upward to the puncture in the large rectangular light integrated in the staircase.

The staircase divides the floor in four ways than one, with the design of its railing making a strong visual statement. Lacquer-painted floor also found on the entrance surface.



In the master bedroom, the wall behind the bedboard is the focus of attention, with a display of all her books. In the master bedroom, in a smaller scale. Made of different woods such as walnut, oak and oak, they give the feel of old doors.



In the daughter's room, the wall behind the bedboard is the focus of attention, with a display of all her books. In the daughter's room, in a smaller scale. Made of different woods such as walnut, oak and oak, they give the feel of old doors.